

Populatia judetului Maramures pe grupe mari de varsta

	9 luni 2015	9 luni 2016	9 luni 2017	9 luni 2018	9 luni 2019
Populatia total	525846	524871	523858	522154	520605
% din total	100.00	100.00	100.00	100.00	100.00
0 - 14 ani	80102	79337	79152	78187	77135
% din total	15.23	15.12	15.11	14.97	14.82
15 -64 ani	371781	369491	367120	364520	362674
% din total	70.70	70.40	70.08	69.81	69.66
65 + ani	73963	76043	77586	79447	80796
% din total	14.07	14.49	14.81	15.22	15.52
Corectiv	1.34	1.34	1.34	1.34	1.34

Demografie

1. Miscarea naturala a populatiei

	9 luni 2014	9 luni 2015	9 luni 2016	9 luni 2017	9 luni 2018	9 luni 2019
Numar nascuti vii	3512	3773	3617	3805	3934	3690
Natalitate	9.30	9.61	9.23	9.73	10.10	9.50
Numar total decedati	3945	4311	4100	4168	4196	4213
Mortalitate	10.45	10.99	10.47	10.66	10.77	10.84
Sporul natural	-433	-538	-483	-363	-262	-523
Numar decese sub un an	18	26	19	24	18	15
din care 0 - 6 zile	7	10	11	11	12	8
0-27 zile	12	19	14	14	13	9
Mortalitate infantila	5.13	6.89	5.25	6.31	4.58	4.07
Numar nascuti morti	14	13	14	12	17	8
Mortinatalitate	3.97	3.43	3.86	3.14	4.30	2.16
Numar decedati 1-4 ani	4	3	3	2	3	2
Numar total decese materne	0	0	0	0	2	0
din care avort	0	0	0	0	0	0
risc obstetric	0	0	0	0	0	0
Mortalitate materna	0.00	0.00	0.00	0.00	0.51	0.00

Mortalitatea specifica pe principalele grupe de afectiuni

	9 luni 2014	9 luni 2015	9 luni 2016	9 luni 2017	9 luni 2018	9 luni 2019
Aparatul cardiocirculator numar	2277	2481	2297	2346	2273	2262
Mortalit.specif.la 100000 loc.	603.25	632.23	586.43	600.09	583.32	582.22
Aparatul respirator numar	259	229	247	291	277	291
Mortalit.specif.la 100000 loc.	68.62	58.36	63.06	74.44	71.09	74.90
Aparatul digestiv numar	315	369	315	336	333	346
Mortalit.specif.la 100000 loc.	83.45	94.03	80.42	85.95	85.46	89.06
Tumori numar	682	748	766	736	803	747
Mortalit.specif.la 100000 loc.	180.68	190.61	195.56	188.26	206.07	192.27
Accidente numar	146	163	173	146	149	151
Mortalit.specif.la 100000 loc.	38.68	41.54	44.17	37.35	38.24	38.87
Alte cauze numar	266	321	302	313	361	416
Mortalit.specif.la 100000 loc.	70.47	81.80	77.10	80.06	92.64	107.08

2. Evidenta gravidelor

	9 luni 2014	9 luni 2015	9 luni 2016	9 luni 2017	9 luni 2018	9 luni 2019
Total nou intrate in evidenta	2160	2368	2329	2426	1648	2282
Nou depistate	2092	2236	2283	2358	2262	2243
Din care cu risc	357	387	345	385	372	329
Nou	1539	1593	1643	1752	1642	1643
depis- in lunile de sarcina I - III						
tate in lunile de sarcina IV - V	348	399	399	404	374	380
in lunile de sarcina VI - IX	205	244	241	202	246	220
Venite din alte teritorii	68	132	46	68	39	39
Scoase din evidenta	1998	2451	2251	2362	2446	2263
Ramase in evidenta	1607	1534	1589	1681	1503	1501

3. Intreruperea cursului sarcinii

		9 luni 2014	9 luni 2015	9 luni 2016	9 luni 2017	9 luni 2018	9 luni 2019
Total avorturi		664	600	579	519	530	590
Indicator la mia de nascuti vii		189.07	159.02	160.08	136.40	134.72	159.89
din care	la cerere	216	266	272	208	165	149
	indicator la mia de nascuti vii	61.50	70.50	75.20	54.66	41.94	40.38
	avort incomplet	448	334	307	311	365	441
	indicator la mia de nascuti vii	127.56	88.52	84.88	81.73	92.78	119.51
	avort provocat	0	0	0	0	0	0
	indicator la mia de nascuti vii	0.00	0.00	0.00	0.00	0.00	0.00

1. Evidenta bolnavilor tuberculosi

		9 luni 2014	9 luni 2015	9 luni 2016	9 luni 2017	9 luni 2018	9 luni 2019
Numar bolnavi noi		280	235	203	230	156	178
Indicator la 100.000 loc.		55.36	44.69	38.68	43.91	29.88	34.19
Numar bolnavi readmisi		34	28	32	25	27	29
Numar bolnavi scosi din evidenta		280	315	236	228	193	184
Nr.bolnavi ramasi in evidenta		391	312	276	282	228	247
Indice de prevalenta la 100 loc.		0.08	0.06	0.05	0.05	0.04	0.05

2. Evidenta bolnavilor de cancer

		9 luni 2014	9 luni 2015	9 luni 2016	9 luni 2017	9 luni 2018	9 luni 2019
Total localizari		1115	1109	1150	1126	1118	1161
Indicator la 100.000 loc.		220.45	210.90	219.10	214.94	214.11	223.01
din care	piele	88	93	104	101	107	122
	san la femei	103	94	89	97	113	82
	col uterin	65	74	50	63	59	67
	bronho-pulmonar	157	146	146	130	138	134
	stomac	63	69	71	68	67	67
	prostata	63	77	80	70	81	103
Nr.bolnavi ramasi in evidenta		11232	11567	11949	12295	12588	13002
Indicator de prevalenta la 100 loc.		2.22	2.20	2.28	2.35	2.41	2.50

3. Evidenta diabetului zaharat

		9 luni 2014	9 luni 2015	9 luni 2016	9 luni 2017	9 luni 2018	9 luni 2019
Total cazuri noi		1516	1217	1341	1447	1450	1492
Indicator la 100.000 loc.		299.73	231.44	255.49	276.22	277.70	286.59
Nr.bolnavi ramasi in evidenta		20596	21471	22451	23550	24677	25814
Indice de prevalenta la 100 loc.		4.07	4.08	4.28	4.50	4.73	4.96

4. Evidenta bolnavilor psihici

		9 luni 2014	9 luni 2015	9 luni 2016	9 luni 2017	9 luni 2018	9 luni 2019
Total cazuri noi		161	159	182	136	182	71
Indicator la 100.000 loc.		31.83	30.24	34.68	25.96	34.86	13.64
Nr.bolnavi ramasi in evidenta		2990	3044	3007	3120	3267	3254
Indice de prevalenta la 100 loc.		0.59	0.58	0.57	0.60	0.63	0.63
Bolnavi psihici periculosi	Total cazuri noi	8	0	5	7	11	12
	Indicator la 100.000 loc.	1.58	0.00	0.95	1.34	2.11	2.31
	Nr.bolnavi ramasi in evidenta	124	124	122	130	142	142
	Indice de prevalenta la 100 loc.	0.02	0.02	0.02	0.02	0.03	0.03

5. Evidenta copiilor (sub 3 ani cu malnutritie proteino-calorica din cabinetul medicului de familie)

		9 luni 2014	9 luni 2015	9 luni 2016	9 luni 2017	9 luni 2018	9 luni 2019
Bolnavi noi	Total 0-3 ani	75	65	53	40	46	36
	din care sub un an	57	40	26	20	36	26
din care decedati	Total 0-3 ani	0	2	1	0	4	0
	din care sub un an	0	0	1	0	1	0
Ramasi in evidenta	Total 0-3 ani	36	36	29	37	36	31
	din care sub un an	16	8	11	19	22	15

6. Evidenta reumatismului articular acut

		9 luni 2014	9 luni 2015	9 luni 2016	9 luni 2017	9 luni 2018	9 luni 2019
Bolnavi noi 0-14 ani	Total	0	0	0	0	0	0
	din care cu leziuni cardiace	0	0	0	0	0	0
ramasi in evidenta		9	9	11	9	9	9

7. Alte boli (cabinetul medicului de familie - ramasi in evidenta)

		9 luni 2014	9 luni 2015	9 luni 2016	9 luni 2017	9 luni 2018	9 luni 2019
Gusa simpla si nodulara netoxica		3793	4168	4345	4542	4622	4647
indice de prevalenta la 100 loc.		0.75	0.79	0.83	0.87	0.89	0.89
Diabet zaharat		16500	16753	17335	17874	18287	18718
indice de prevalenta la 100 loc.		3.26	3.19	3.30	3.41	3.50	3.60
Malnutritia proteino-calorica		394	388	313	314	294	292
indice de prevalenta la 100 loc.		0.08	0.07	0.06	0.06	0.06	0.06
Rahitism evolutiv		103	120	114	97	82	100
indice de prevalenta la 100 loc.		0.02	0.02	0.02	0.02	0.02	0.02
Anemii		4739	4832	4515	4671	4576	4440
indice de prevalenta la 100 loc.		0.94	0.92	0.86	0.89	0.88	0.85
Tulburari mintale		8625	10035	10113	10542	10658	10645
indice de prevalenta la 100 loc.		1.71	1.91	1.93	2.01	2.04	2.04
Epilepsie		3032	2969	3030	3058	3012	3019
indice de prevalenta la 100 loc.		0.60	0.56	0.58	0.58	0.58	0.58
Reumatism articular acut		779	745	740	676	635	665
indice de prevalenta la 100 loc.		0.15	0.14	0.14	0.13	0.12	0.13
Cardiopatii reumatismale cronice		723	727	699	694	654	650
indice de prevalenta la 100 loc.		0.14	0.14	0.13	0.13	0.13	0.12
Boli hipertensive		50911	54317	56482	58289	58871	58958
indice de prevalenta la 100 loc.		10.07	10.33	10.76	11.13	11.27	11.32
Cardiopatie ischemica		25121	26154	26760	27707	27438	27228
indice de prevalenta la 100 loc.		4.97	4.97	5.10	5.29	5.25	5.23
Cord pulmonar cronic		1269	1208	1210	1225	1306	1282
indice de prevalenta la 100 loc.		0.25	0.23	0.23	0.23	0.25	0.25
Boli cerebro-vasculare		7702	8001	8197	8382	8506	8555
indice de prevalenta la 100 loc.		1.52	1.52	1.56	1.60	1.63	1.64
Boli pulmonare cronice obstructive		9258	9813	10197	10216	10247	10248
indice de prevalenta la 100 loc.		1.83	1.87	1.94	1.95	1.96	1.97
Boala ulceroasa		5237	5040	4986	4941	4800	4621
indice de prevalenta la 100 loc.		1.04	0.96	0.95	0.94	0.92	0.89
Ciroza si alte hepatite cronice		6481	6927	6852	6575	6236	6000
indice de prevalenta la 100 loc.		1.28	1.32	1.31	1.26	1.19	1.15
Nefritopatii cronice		1090	1288	1286	1293	1247	1232
indice de prevalenta la 100 loc.		0.22	0.24	0.25	0.25	0.24	0.24
Calculoza urinara		2238	2363	2314	2356	2322	2315
indice de prevalenta la 100 loc.		0.44	0.45	0.44	0.45	0.44	0.44
Malfor- matii congeni- tale	Total	822	883	864	867	877	871
	indice de prev.la 100 loc.	0.16	0.17	0.16	0.17	0.17	0.17
	din care aparat circulator	434	437	425	437	447	443
	indice de prev.la 100 loc.	0.09	0.08	0.08	0.08	0.09	0.09

DSP Maramures
Compartiment Statistica/Informatica in S.P.

9. Bolnavi iesiti din spital

		9 luni 2014	9 luni 2015	9 luni 2016	9 luni 2017	9 luni 2018	9 luni 2019
Total		64483	62765	61130	59503	58621	58967
din care	din comune	29935	29818	29218	28581	28737	28638
	sub un an	3682	3792	3451	3451	3636	3506
din tot.	infectioase	2983	2706	3246	3330	3286	3327
	tumori maligne	5038	4984	4452	3621	4023	4314
	aparat circulator	8784	8546	9006	8614	8958	8403
	din care infarct ac.miocardic	308	375	326	408	487	470
	alte ischem.miocard	669	420	770	673	494	507
	cerebro-vasculare	1725	1637	1689	1888	1681	1603
	aparat respirator	9906	9489	8646	7750	8341	8248
	aparat digestiv	6641	6250	6031	5482	5288	5124
	aparat uro-genital	3702	3439	3454	2674	2502	2619
	sistem osteo-articular	3721	3754	3934	3547	3758	3636
	traumatisme/otraviri	3306	3237	3019	3170	2946	2749
	tulb.mintale cu dur.de spit.>365	0	0	863	75	0	0
	cu consum ilicit de droguri	0	0	3	8	1	0
	din care prima spitalizare	0	0	1	0	0	0
	Nascuti vii cu malformatii cong.	82	40	43	36	30	16
	din care Down	0	1	0	0	1	0
	total decedati din iesiti	1413	1564	1579	1761	1770	1735

10. Infectii interioare din spital

		9 luni 2014	9 luni 2015	9 luni 2016	9 luni 2017	9 luni 2018	9 luni 2019
TOTAL		47	56	65	91	205	258
din care	Pediatric	0	2	4	2	4	6
	Nou nascuti	6	4	4	0	2	0
	Obstetrica	1	0	0	1	0	0
	Ginecologie	0	0	2	1	5	4
	Chirurgie	6	21	8	4	29	42
	ATI	14	6	21	13	38	39
	Dializa	0	0	0	0	0	1
	Alte sectii	20	23	26	70	127	166

*Nota: datele pe 9 luni 2004 nu cuprind spitalul Borsa

DSP Maramures
Compartiment Statistica/Informatica in S.P.

11. Boli infectioase si parazitare - cazuri noi

		9 luni 2014	9 luni 2015	9 luni 2016	9 luni 2017	9 luni 2018	9 luni 2019
Tuberculoza		280	235	203	230	156	178
Hepatita virala	Total	35	43	14	9	37	72
	incidenta la 100.000 loc.	6.92	8.18	2.67	1.72	7.09	13.83
	din care hepatita virala A	32	40	2	5	33	68
	hepatita virala B	2	3	2	1	1	1
Sifilis	Total	8	13	13	11	1	5
	incidenta la 100.000 loc.	1.58	2.47	2.48	2.10	0.19	0.96
	din care sifilis congenital	0	1	0	0	0	0
Infectie gonococica tot.cazuri		2	0	3	4	0	0
incidenta la 100.000 loc.		0.40	0.00	0.57	0.76	0.00	0.00
Tuse convulsiva		0	0	0	1	0	0
Rujeola		0	0	0	3	6	38
Rubeola	Total din care	0	0	0	0	0	0
	Rubeola congenitala	0	0	0	0	0	0
Difterie		0	0	0	0	0	0
Tetanos	Total din care	0	0	0	0	0	0
	Tetanos neonatal	0	0	0	0	0	0
Poliomielita		0	0	0	0	0	0
Parotidita epidemica		0	1	0	0	0	1
Malarie		0	0	0	1	0	0

12. HIV, SIDA

	9 luni 2014	9 luni 2015	9 luni 2016	9 luni 2017	9 luni 2018	9 luni 2019
Numar cazuri noi HIV	10	12	10	7	4	9
Nr.cumulativ HIV cazuri seropozitive	17	17	19	57	22	61
Nr.cazuri noi SIDA	0	0	0	0	0	0
Nr.total cazuri noi SIDA ramase in evidenta	51	60	67	72	76	42

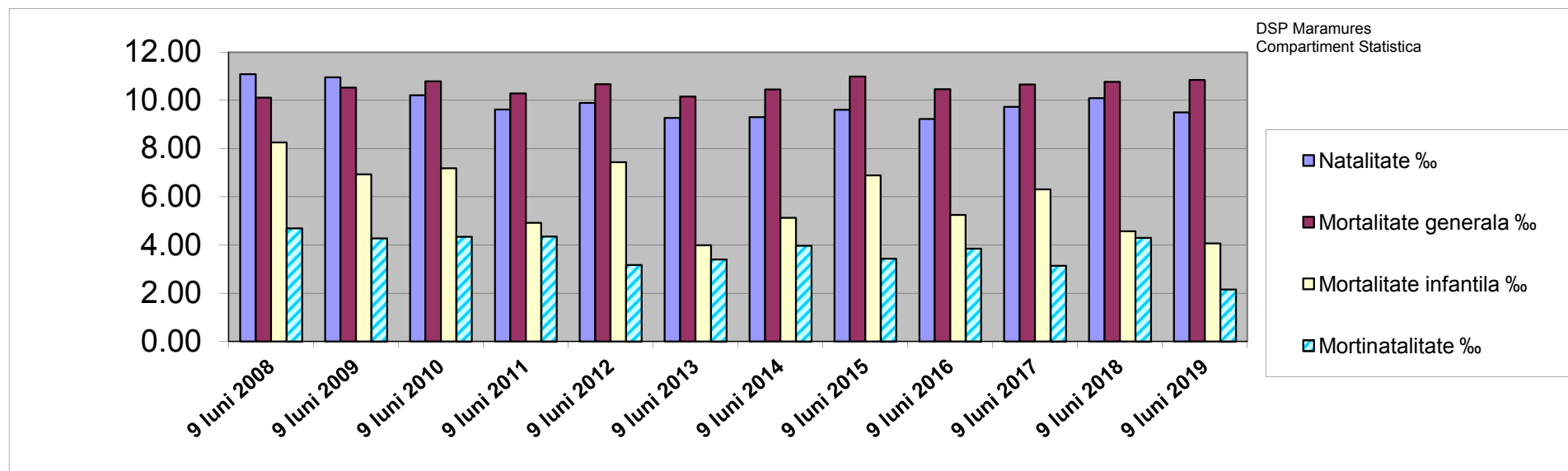
1. Miscarea naturala a populatiei

	9 luni 2008	9 luni 2009	9 luni 2010	9 luni 2011	9 luni 2012	9 luni 2013	9 luni 2014	9 luni 2015	9 luni 2016	9 luni 2017	9 luni 2018	9 luni 2019
Nr. nascuti vii	4242	4185	3897	3659	3765	3512	3512	3773	3617	3805	3934	3690
Natalitate ‰	11.09	10.95	10.22	9.62	9.90	9.27	9.30	9.61	9.23	9.73	10.10	9.50
Nr. decese generale	3867	4023	4115	3913	4061	3848	3945	4311	4100	4168	4196	4213
Mortalitate generala ‰	10.11	10.53	10.79	10.29	10.68	10.16	10.45	10.99	10.47	10.66	10.77	10.84



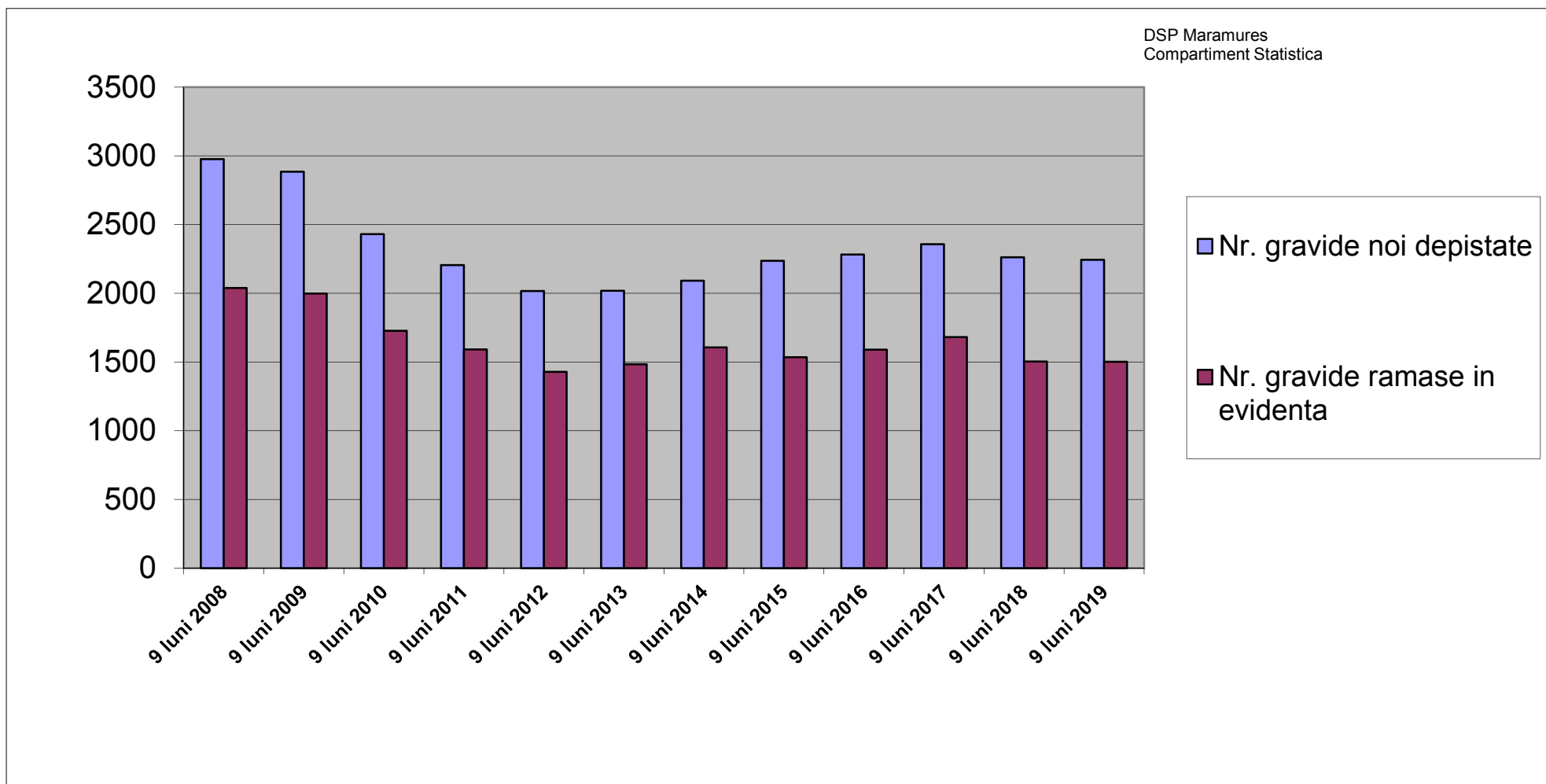
1. Miscarea naturala a populatiei

	9 luni 2008	9 luni 2009	9 luni 2010	9 luni 2011	9 luni 2012	9 luni 2013	9 luni 2014	9 luni 2015	9 luni 2016	9 luni 2017	9 luni 2018	9 luni 2019
Nr.decedati sub un an	35	29	28	18	28	14	18	26	19	24	18	15
Mortalitate infantila ‰	8.25	6.93	7.19	4.92	7.44	3.99	5.13	6.89	5.25	6.31	4.58	4.07
Nr. decedati 1-4 ani	5	4	4	3	5	3	4	3	3	2	3	2
Numar nascuti morti	20	18	17	16	12	12	14	13	14	12	17	8
Mortinatalitate ‰	4.69	4.28	4.34	4.35	3.18	3.41	3.97	3.43	3.86	3.14	4.30	2.16
Nr.decese materne	0	0	0	0	0	0	0	0	0	0	2	0
Mortalitate materna	0.00	0.00	0.00	0.00	0.00	0.00	0.00	0.00	0.00	0.00	0.51	0.00



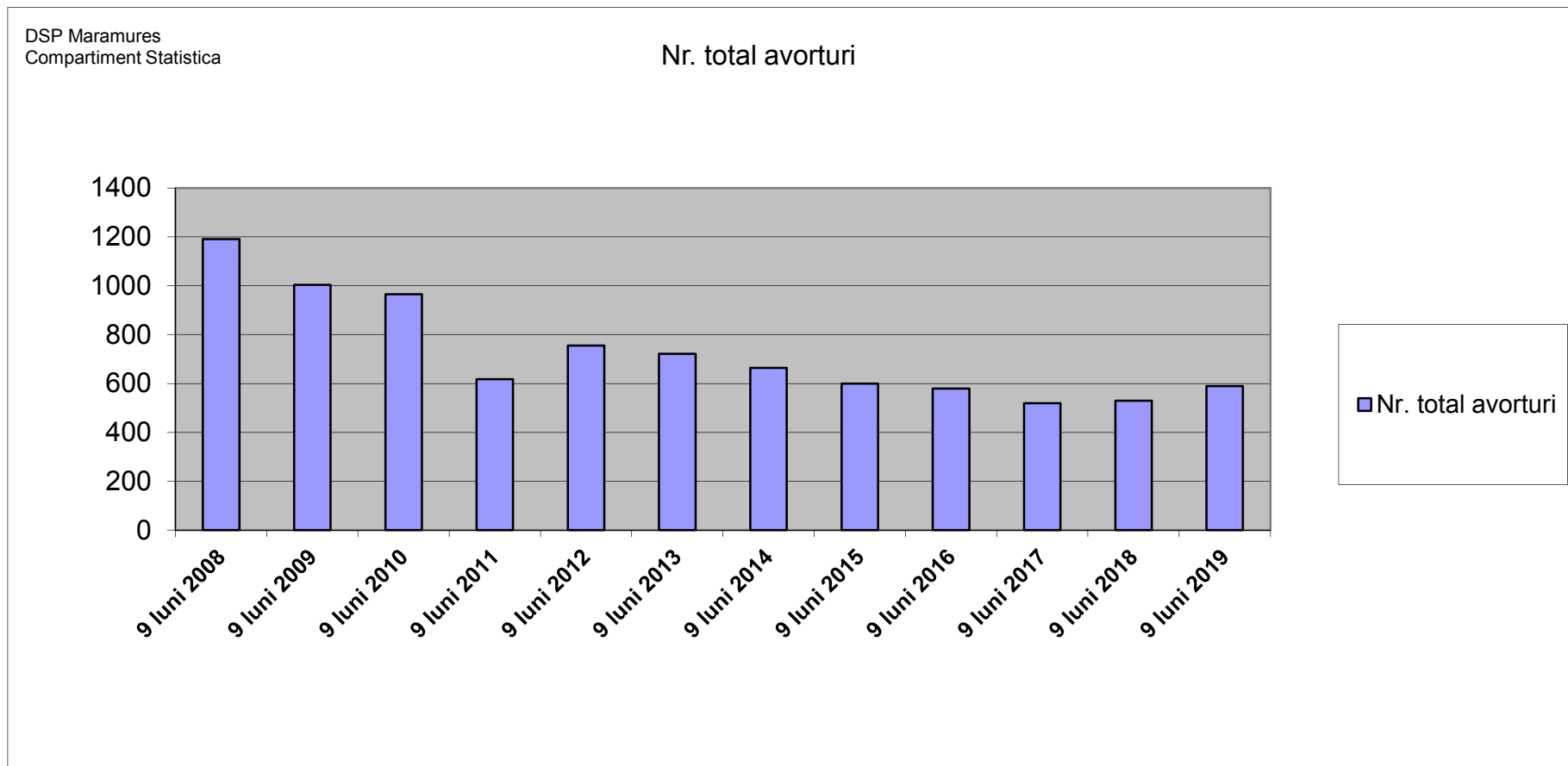
2 Evidenta gravidelor

	9 luni 2008	9 luni 2009	9 luni 2010	9 luni 2011	9 luni 2012	9 luni 2013	9 luni 2014	9 luni 2015	9 luni 2016	9 luni 2017	9 luni 2018	9 luni 2019
Nr. gravide noi depistate	2976	2885	2431	2205	2016	2018	2092	2236	2283	2358	2262	2243
Nr. gravide ramase in evidenta	2039	1998	1728	1591	1428	1483	1607	1534	1589	1681	1503	1501



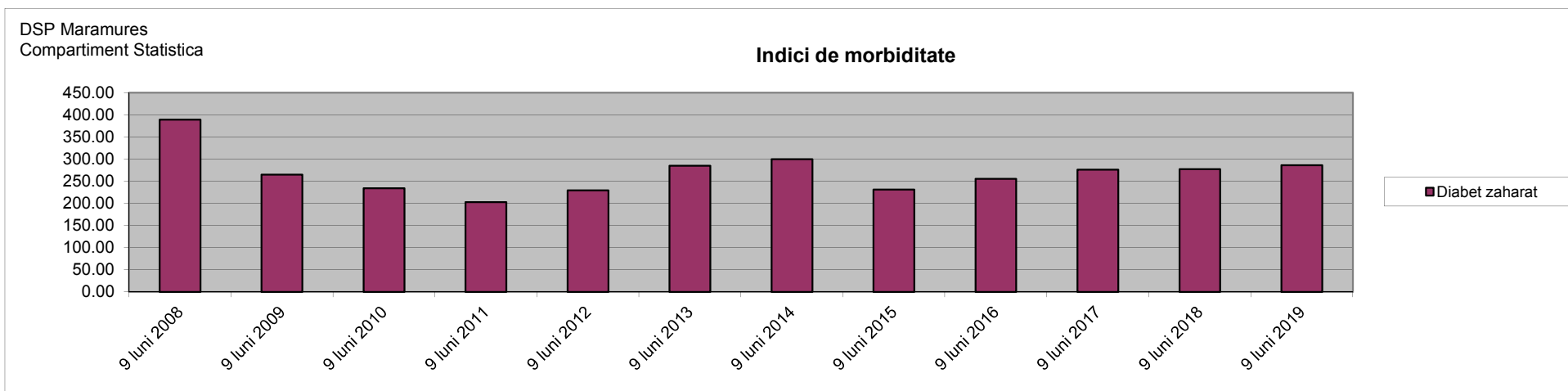
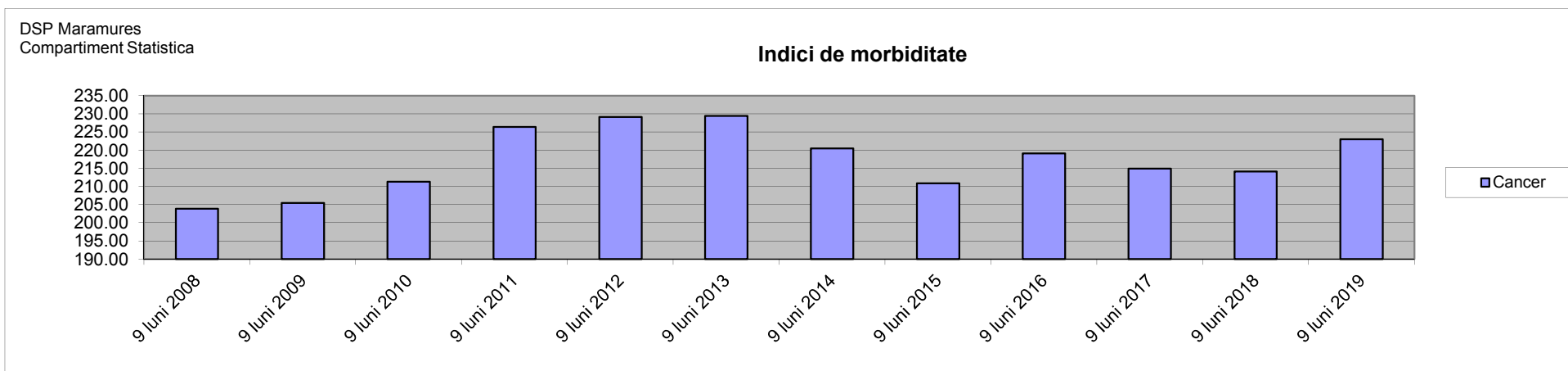
3 Intreruperea cursului sarcinii

	9 luni 2008	9 luni 2009	9 luni 2010	9 luni 2011	9 luni 2012	9 luni 2013	9 luni 2014	9 luni 2015	9 luni 2016	9 luni 2017	9 luni 2018	9 luni 2019
Nr. total avorturi	1191	1004	965	618	755	722	664	600	579	519	530	590



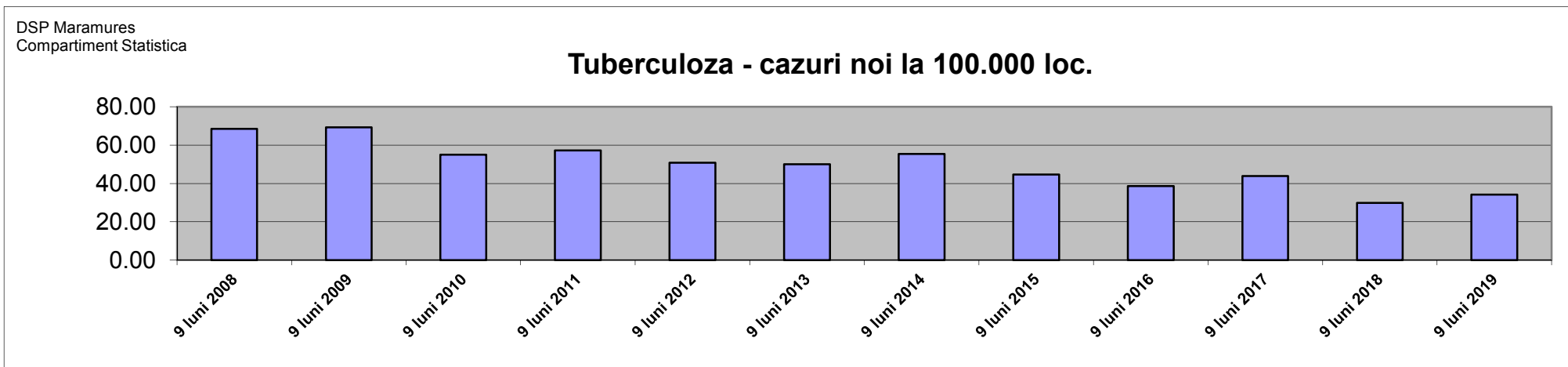
Morbiditate Cazuri noi

		9 luni 2008	9 luni 2009	9 luni 2010	9 luni 2011	9 luni 2012	9 luni 2013	9 luni 2014	9 luni 2015	9 luni 2016	9 luni 2017	9 luni 2018	9 luni 2019
Cancer	numar cazuri noi	1045	1052	1080	1154	1168	1165	1115	1109	1150	1126	1118	1161
	indice la 100.000 loc	203.88	205.49	211.31	226.43	229.17	229.44	220.45	210.90	219.10	214.94	214.11	223.01
Diabet zaharat	numar cazuri noi	1995	1358	1196	1034	1170	1447	1516	1217	1341	1447	1450	1492
	indice la 100.000 loc	389.22	265.26	234.01	202.88	229.56	284.98	299.73	231.44	255.49	276.22	277.70	286.59



Morbiditate Boli infectioase - cazuri noi

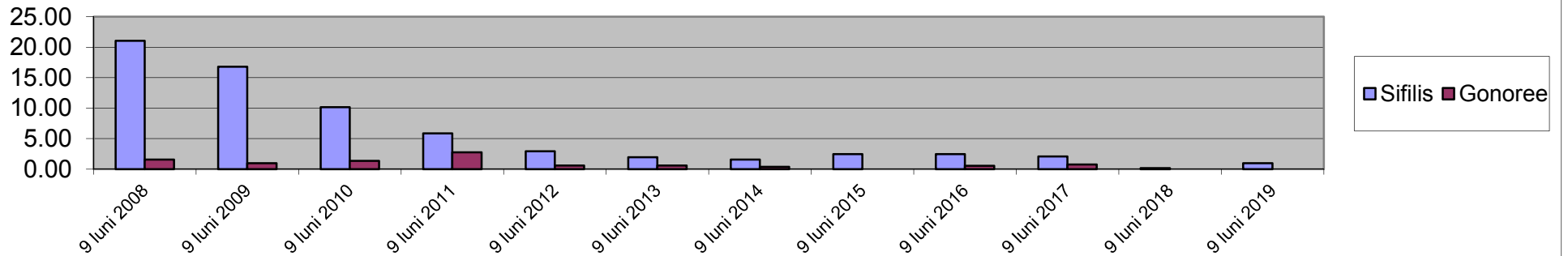
		9 luni 2008	9 luni 2009	9 luni 2010	9 luni 2011	9 luni 2012	9 luni 2013	9 luni 2014	9 luni 2015	9 luni 2016	9 luni 2017	9 luni 2018	9 luni 2019
Tuberculoza	numar cazuri noi	351	355	281	292	259	254	280	235	203	230	156	178
	indice la 100.000 loc	68.48	69.34	54.98	57.29	50.82	50.02	55.36	44.69	38.68	43.91	29.88	34.19



		9 luni 2008	9 luni 2009	9 luni 2010	9 luni 2011	9 luni 2012	9 luni 2013	9 luni 2014	9 luni 2015	9 luni 2016	9 luni 2017	9 luni 2018	9 luni 2019
Sifilis	numar cazuri noi	108	86	52	30	15	10	8	13	13	11	1	5
	indice la 100.000 loc	21.07	16.80	10.17	5.89	2.94	1.97	1.58	2.47	2.48	2.10	0.19	0.96
Gonoree	numar cazuri noi	8	5	7	14	3	3	2	0	3	4	0	0
	indice la 100.000 loc	1.56	0.98	1.37	2.75	0.59	0.59	0.40	0.00	0.57	0.76	0.00	0.00

DSP Maramures
 Compartiment Statistica

Indici la 100.000 loc.

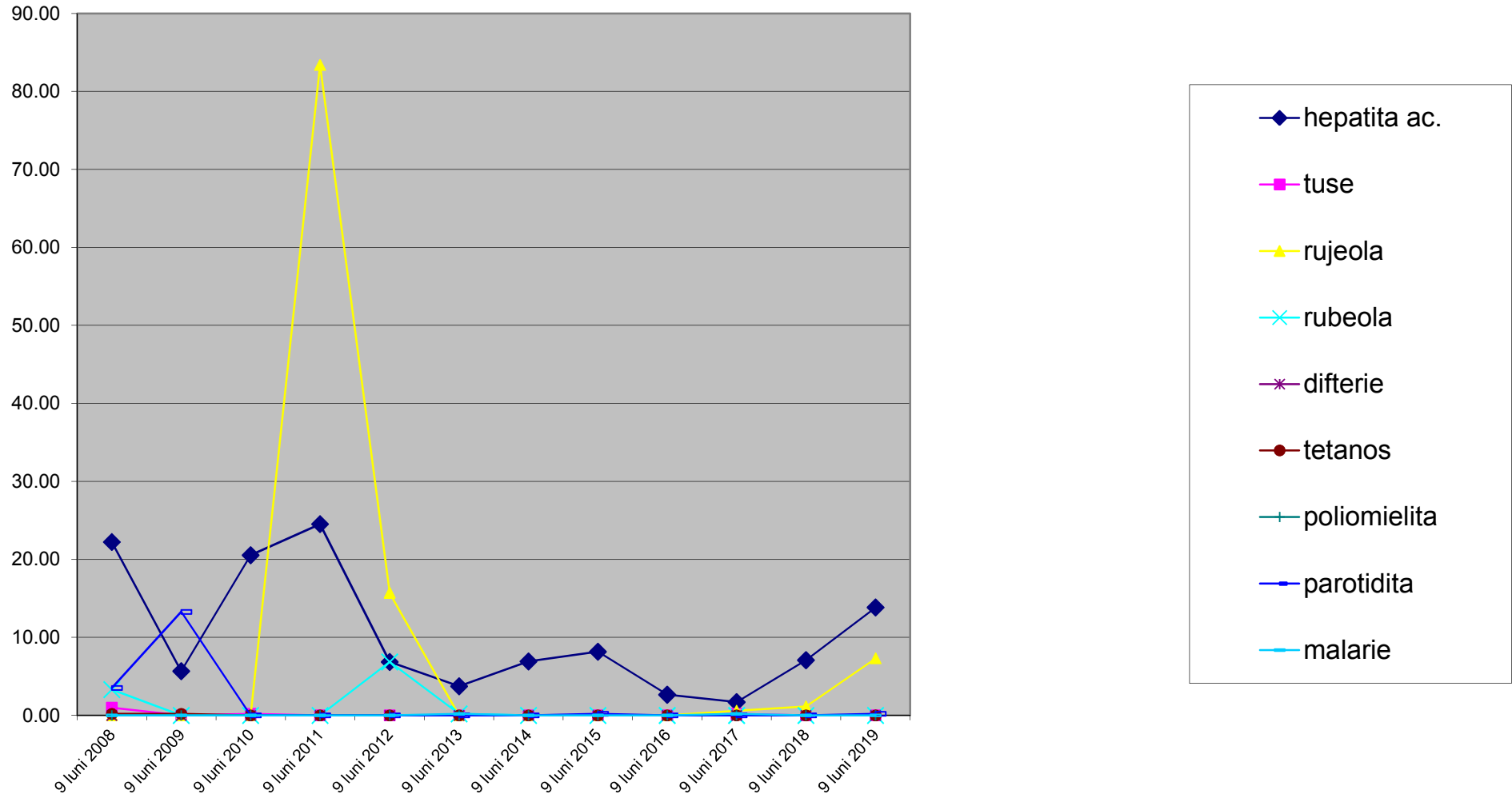


DSP Maramures
Compartiment Statistica/Informatica in S.P.

		9 luni 2008	9 luni 2009	9 luni 2010	9 luni 2011	9 luni 2012	9 luni 2013	9 luni 2014	9 luni 2015	9 luni 2016	9 luni 2017	9 luni 2018	9 luni 2019
hepatita ac.	numar cazuri noi	114	29	105	125	35	19	35	43	14	9	37	72
	indice la 100.000 loc	22.24	5.66	20.54	24.53	6.87	3.74	6.92	8.18	2.67	1.72	7.09	13.83
tuse convulsiva	numar cazuri noi	5	0	1	0	0	0	0	0	0	1	0	0
	indice la 100.000 loc	0.98	0.00	0.20	0.00	0.00	0.00	0.00	0.00	0.00	0.19	0.00	0.00
rujeola	numar cazuri noi	0	0	0	425	80	0	0	0	0	3	6	38
	indice la 100.000 loc	0.00	0.00	0.00	83.39	15.70	0.00	0.00	0.00	0.00	0.57	1.15	7.30
rubeola	numar cazuri noi	17	0	0	0	35	1	0	0	0	0	0	0
	indice la 100.000 loc	3.32	0.00	0.00	0.00	6.87	0.20	0.00	0.00	0.00	0.00	0.00	0.00
din care congenitala	numar cazuri noi	0	0	0	0	2	1	0	0	0	0	0	0
	indice la 100.000 loc	0.00	0.00	0.00	0.00	0.39	0.20	0.00	0.00	0.00	0.00	0.00	0.00
difterie	numar cazuri noi	0	0	0	0	0	0	0	0	0	0	0	0
	indice la 100.000 loc	0.00	0.00	0.00	0.00	0.00	0.00	0.00	0.00	0.00	0.00	0.00	0.00
tetanos	numar cazuri noi	1	1	0	0	0	0	0	0	0	0	0	0
	indice la 100.000 loc	0.20	0.20	0.00	0.00	0.00	0.00	0.00	0.00	0.00	0.00	0.00	0.00
din care neonatal	numar cazuri noi	0	0	0	0	0	0	0	0	0	0	0	0
	indice la 100.000 loc	0.00	0.00	0.00	0.00	0.00	0.00	0.00	0.00	0.00	0.00	0.00	0.00
poliomielita	numar cazuri noi	0	0	0	0	0	0	0	0	0	0	0	0
	indice la 100.000 loc	0.00	0.00	0.00	0.00	0.00	0.00	0.00	0.00	0.00	0.00	0.00	0.00
parotidita	numar cazuri noi	18	68	0	0	0	0	0	1	0	0	0	1
	indice la 100.000 loc	3.51	13.28	0.00	0.00	0.00	0.00	0.00	0.19	0.00	0.00	0.00	0.19
malarie	numar cazuri noi	0	0	0	0	0	1	0	0	0	1	0	0
	indice la 100.000 loc	0.00	0.00	0.00	0.00	0.00	0.20	0.00	0.00	0.00	0.19	0.00	0.00

DSP Maramures
Compartiment Statistica

Indici de morbiditate la 100.000 loc



Prevalenta - ramasi in evidenta la 100 loc.-

	9 luni 2008	9 luni 2009	9 luni 2010	9 luni 2011	9 luni 2012	9 luni 2013	9 luni 2014	9 luni 2015	9 luni 2016	9 luni 2017	9 luni 2018	9 luni 2019
Boli hipertensive	7.44	8.11	8.61	8.94	9.20	9.34	10.07	10.33	10.76	11.13	11.27	11.32
Cardiopatie ischemica	4.00	4.30	4.58	4.71	4.80	4.84	4.97	4.97	5.10	5.29	5.25	5.23
Cancer	1.81	1.87	1.94	2.02	2.04	2.15	2.22	2.20	2.28	2.35	2.41	2.50
Diabet zaharat	2.82	3.18	3.41	3.53	3.65	3.85	4.07	4.08	4.28	4.50	4.73	4.96

